







3



1



1

- Popular Location
- Three Bedrooms
- Close To Amenities
- Council Tax Band \*A\*
- Call For More Information
- First Floor Flat
- Great First Time Buy
- Leasehold
- Viewing Recommended
- Video Tour Available







**\*\* Video Tour on our YouTube Channel | <https://youtu.be/v-temFVkbY8>\*\***

This spacious three-bedroom, first floor flat is positioned in a popular area of Shieldfield and is an ideal property for the first time buyer or growing family.

The property is accessed via an entrance with stairs to the first-floor landing and features three well-proportioned bedrooms, a bright and airy living dining room, a well-appointed kitchen, and a modern bathroom WC. Further benefits include gas central heating, double glazing, and storage space in the loft. Externally there is a good sized garden to the rear.

The location makes it an attractive choice for both homeowners and investors alike.

Shieldfield is just east of Newcastle city centre and offers a vibrant and well-connected living environment. Its proximity to the city centre provides residents with easy access to a wide array of amenities, including shops, restaurants, and entertainment venues. The area is well-served by public transport, with Manors Metro station just a short walk away, facilitating convenient travel throughout Newcastle and beyond.

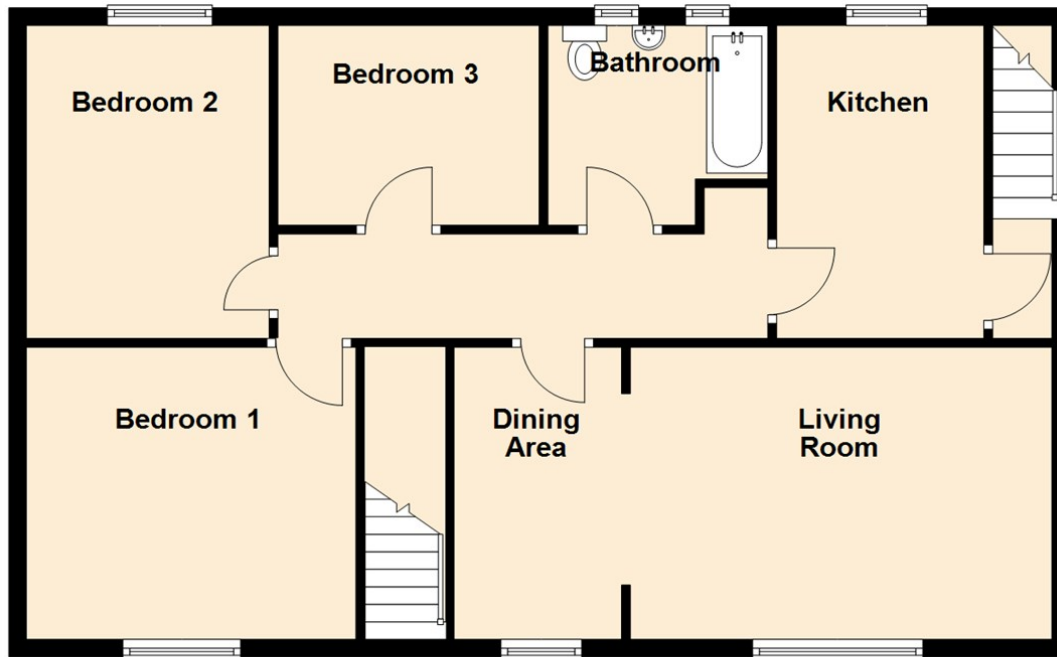
To book a viewing or for more information, please call our sales team on 0191 236 2070.

#### Tenure

The agent understands the property to be leasehold. However, this should be confirmed with a licensed legal representative.

Council Tax Band \*A\*.

## First Floor



Lounge Dining Room 23'4" x 10'9" (7.12 x 3.30)

Kitchen 11'9" x 10'3" (3.59 x 3.14)

Bedroom One 10'10" x 13'6" (3.32 x 4.12)

Bedroom Two 11'3" x 9'10" (3.45 x 3.01)

Bedroom Three 7'11" x 8'4" (2.43 x 2.56)

Energy Efficiency Rating		
	Current	Potential
Very energy efficient - lower running costs		
(92 plus) A		
(81-91) B		
(69-80) C	73	75
(55-68) D		
(39-54) E		
(21-38) F		
(1-20) G		
Not energy efficient - higher running costs		
England & Wales	EU Directive 2002/91/EC	

## The difference between house and home

You may download, store and use the material for your own personal use and research. You may not republish, retransmit, redistribute or otherwise make the material available to any party or make the same available on any website, online service or bulletin board of your own or of any other party or make the same available in hard copy or in any other media without the website owner's express prior written consent. The website owner's copyright must remain on all reproductions of material taken from this website.



[www.janforsterestates.com](http://www.janforsterestates.com)

Gosforth  
High Heaton  
Tynemouth  
Property Management Centre

0191 236 2070  
0191 270 1122  
0191 257 2000  
0191 236 2680

